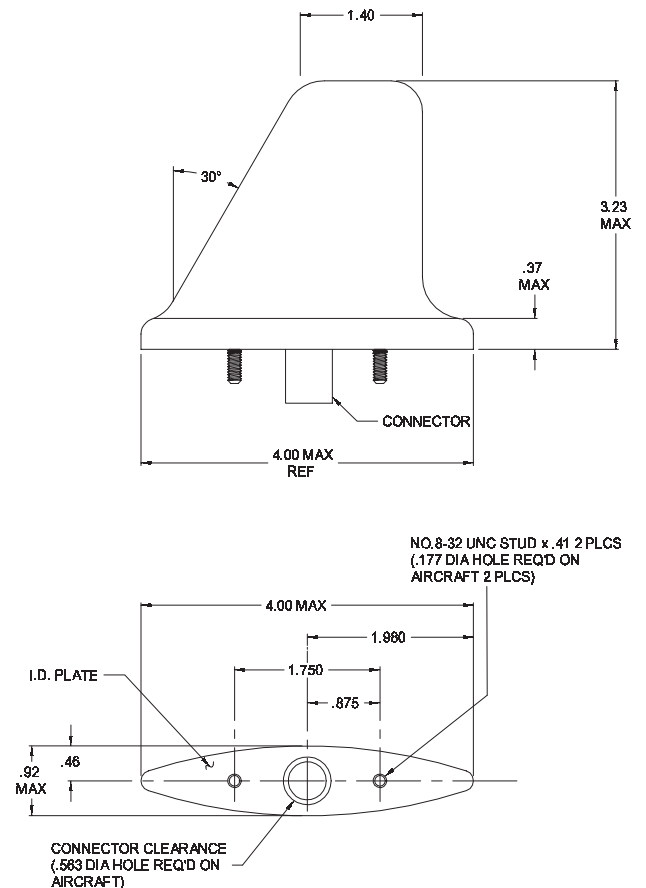


Frequency • 960-1220 MHz & 1030-1090 MHz

Broadband and rugged antenna designed for DME or transponder use. Antenna assembly encased in a glass reinforced polyester molded shell. Standard two stud mounting configuration. CI 105 includes a BNC connector.



MODEL	CI 105 DME / Transponder
Electrical	
Frequency	960 to 1220 MHz 1030 to 1090 MHz
VSWR	1.5:1 960 to 1220 MHz 1.3:1 1030 to 1090 MHz
Polarization	Vertical
Radiation Pattern	Equivalent of $\lambda / 4$ Stub
Impedance RF	50 Ohms
Resistance DC	Open Circuit
Power RF	2.5 KW Peak
Mechanical	
Weight	0.24 lb. Maximum
Height	3.23 in. Maximum
Material	Molded Radome
Finish	Polyurethane Enamel
Connector	BNC (female)
Environmental	
Temperature	-54°C to +55°C
Altitude	70,000 ft.
Air Speed	400 Knots TAS at 25,000 ft.
Federal Specifications	
RTCA Environmental	DO-160C
Environmental Category	[E1]-B[CLY]XRHXXXXXXXXXXXXXX
FAA TSO	C66b, C74c
RTCA MOPS	DO-144, DO-189
ORDER OPTIONS	
Connector	
BNC	Standard
Color	
White	Standard
Gasket	
	B10505



Warning: Drawing not to scale. Use factory supplied drawings and specifications for installation. Call Comant for updated drawings.
©2004 Comant Industries Inc. Patented. Other Patents Pending